



Region 7 One Voice

January 15, 2011



A Midwest Plains Region 7 Sweet Adelines International Publication Winter 2011

Very Important News



Region 7 Competition Bulletin

March 25-27, 2011

Overland Park Convention Center
Lodging at Overland Park Sheraton
6100 College Blvd
Overland Park, KS 66211

All Chorus and Quartet contestants should carefully read the Rules of Competition in the Policy Book, Section 25

JUDGING PANEL:

Kim Hulbert Vaughn—Sound
Mary Ann Wydra—Music
Judy Pozsgay—Showmanship
Joan K. Levitin—Expression and Panel Chair
Judy Widener—Panel Secretary

WITHDRAWALS:

If any contestant needs to withdraw, a WRITTEN notice must be received at International Headquarters. A phone call is NOT considered official. Please also advise Nancy Urbauer, CRC & Vicki Ellis, CC in writing.

DEADLINES:

- ⇒ **01/24** - Quartet deadline (late entry fees apply after this date)
- ⇒ **01/25** - Chorus deadline (late entry fees apply after this date)
- ⇒ **02/11** - Final room list and quartet information form due to Jill Vanderpool. No payment due.
- ⇒ **02/23**- All Events Pass order form, name list and full payment due to Marilyn Townsend, Kansas City Chorus
- ⇒ **02/11** - Tentative meal arrangements must be made with Sherry Anderson
- ⇒ **02/28**—No room changes can be made after this date
- ⇒ **03/04**- Invoices for rooms and meals will be prepared and emailed to the chapters beginning this date

- ⇒ **03/11** - Order of Songs and Song Titles Form due via e-mail to Vicki Ellis, CC
- ⇒ **03/16** Sherry Anderson will contact chapters to finalize meal arrangements. Any required billing adjustments will be made later.
- ⇒ **03/16** - Total payment for rooms is due and must be paid directly to the Sheraton Hotel. Total payment for meals is due and must be paid to the Overland Park Convention Center

COPYRIGHT CLEARANCE: All music must have cleared the copyright process. Please refer all questions and/or comments to the Director of Music Services, Carol Schwartz (1-800-992-7464) for handling. Regional personnel will not address these issues on site.

Registration for the convention will be held in the main lobby of the Sheraton Hotel next to the escalators leading to the lower floor. **Every competing Sweet Adeline attending, including the Assistance Chorus must have an All Events Pass purchased in advance even if only attending one event.** Prior to competition weekend, All Events Passes are \$55 each and are transferable but not refundable; and, single event (Chorus Contest, Quartet Contest, Show of Champions) tickets are \$20.00. All Events Passes and single event tickets will be sold to non-competing members and the general public on Friday or Saturday of the annual Regional Competition at the Convention Center. On site, All Events passes are \$59.00 and single event tickets are \$22 for each event. On site prices include required tax.

HOUSING:

All choruses will stay at the Sheraton. Room keys will be distributed to your chorus contact when rooms for entire chorus are ready. Hotel check in starts at 4pm; checkout is noon. Room charges per nights, are listed below (all rates include state and hotel taxes):

Type of Room	Cost
Single (1 king bed/1person)	\$148.24
King Double (1 king/2 persons)	\$148.24
Queen Double (2 queen beds/2 persons)*	\$148.24
Triple (2 queen beds/3 persons)	\$148.24
Quad (2 queen beds/4 persons)	\$148.24
Hospitality Suite**	\$242.36
Junior Suite***	\$265.89

*These rooms will be assigned to 2 people only if any remain after all the quad room requests are filled. If not, a King Double will be assigned to 2 persons.



Region 7 One Voice

January 15, 2011



A Midwest Plains Region 7 Sweet Adelines International Publication Winter 2011

Very Important News

**A large open room with meeting table and chairs on one side, plus TV and loveseat-sized sofa sleeper that sleeps two people, plus connecting, large living room w/TV & loveseat-sized sofa sleeper that sleeps one.

When requesting rooms, please be aware of the following:

“Adjoining” means rooms on the same floor. In may be next door to each other, but there is NO DOOR between them.

“Connecting” means rooms are next door to each other with a DOOR THAT OPENS between the two rooms. “Connecting” rooms are one King connecting to two queen beds. There are NO connecting rooms in the hotel with 2 queen beds in each room.

A rollaway bed can be rented for \$29.41 for entire stay but can only be put in king bedroom, not in room with 2 queen beds.

A refrigerator can be rented for \$15 for entire stay & put in any room. Refrigerators are limited

The hotel will make every attempt to fill all room requests for a chorus on the same floor.

Special room requests (e.g. adjoining rooms, connecting rooms, suites, etc.) will be accommodated UPON AVAILABILITY.

Do not bring excessive amounts of food or coolers into the hotel. Please DO NOT ATTACH SIGNS TO WALLS OR DOORS IN THE HOTEL. Thank you.

Competing quartets are urged to check in on Thursday so they can get ready for the Quartet Briefing on Friday morning.

Maps and directions available at

<http://www.opconventioncenter.com/3300/MapsDirections&Parking.asp>

CONVENTION SCHEDULE:

Friday, March 25, 2011

10:00 am	Chorus Mic Testing	Convention Center
10:00 am	*Inspection-Panel Chair	Convention Center
10:00 am	*Directors View Stage	Convention Center
10:30 am	*Quartet Briefing (joint information w/ Directors)	Convention Center
10:30 —11:15 am	*Quartets view stage	Convention Center
10:45 am	Quartet Mic Testing	Convention Center
11:00 am	Directors Briefing	Convention Center
11:30-12:00 pm	Club 7 Meeting & BOD	Convention Center
3:00-6:00 pm	Registration	Sheraton Hotel
3:00-6:00 pm	Bazaar	Convention Center
3:00-4:00 pm	RAMM Meeting	Convention Center
4:30-5:00 pm	Competition Staff Meeting	Convention Center
4:45 pm	Curtain Call	Convention Center
5:00-10:30 pm**	Quartet Competition	Convention Center
10:30-11:59 pm	Bazaar	Convention Center

* all activities noted as 10:00 am will run consecutively as quickly as possible.

Saturday, March 26, 2010

** Time may change depending on the number of competitors.

8:00 am-1:00 pm	Bazaar	Convention Center
12:45 pm	Curtain call	Convention Center
1:00-5:00 pm**	Chorus Competition	Convention Center
8:00-11:45 pm	Show of Champion Party	Convention Center
5:00-11:00 pm	Bazaar	Convention Center

PHOTOGRAPHS:



Region 7 One Voice

January 15, 2011



A Midwest Plains Region 7 Sweet Adelines International Publication Winter 2011

Very Important News

Jon B. Petersen Photography, Inc will provide the photographic services for both the quartet and the chorus competition and prices for photographs will apply at competition time only as follows:

5X7 Color	\$12.00 each
8X10 Color	\$15.00 each
11X14 Color	\$17.00 each
8X16 Color (chorus only)	\$22.00 each
8-2X3 Color (\$5.00each)	\$40.00 each
(Minimum order is 8; additional 2x3's are \$5.00 each	
8X10 B/W	\$15.00 each
Quartet Postage	\$ 8.00
Chorus Postage	\$12.00

Photographs will be mailed 6-8 weeks after competition.

Complimentary black and white photos of the winners will be furnished, if requested.

All orders must be prepaid at the time of competition.

Awards and candid photographs will be posted to Jon Petersen's website for purchase beginning 14 days after competition at jonbpetersen.photorelect.com

All pictures of quartets and choruses will be taken prior to performance at a designated area. Picture taking will be a part of the traffic pattern. The competition Coordinator, Vicki Ellis, will supply this schedule to each competitor.

SHOW OF CHAMPIONS:

The Show of Champions will return to the traditional format as we have had in past years at 8:00 p.m. ending around 9:30. Rooms have been made available for individual chorus parties (info has been communicated to Team Coordinators/ Presidents).

MISCELLANEOUS:

No flash cameras, tape recorders or video cameras are permitted in the competition area.

No purses are allowed in the chorus traffic pattern. Each chorus will receive one shopping bag per

row. Hostesses will hold quartet purses and escort quartets and choruses to reserved seating after their performance.

Neither the assisting chorus nor the Steering Committee will be responsible for providing wheelchairs. Please make your own arrangements. You MUST advise the Competition Coordinator IN ADVANCE if you will need additional time to secure riser chairs on stage.

FURTHER QUESTIONS?

Each quartet/chorus contact was sent a 29-page packet containing information in addition to what is given above. If your questions are not answered there, contact Nancy Urbauer, Chair of Regional Contest.

Notes from you Region Events Coordinator...

The time is fast approaching and your partially new Competition Steering Committee is hard at work trying to getting the event ready especially for you. We are truly blessed to have such hard working ladies to get everything done so that everyone can enjoy a very eventful and thrilling Competition.

This is a note from last year - *When I met with Overland Park Convention Center in preparation for our competition they were a little concerned about water coolers being moved.* Yea, thanks for your cooperation – no complaints from last year so evidently none got moved.

We are always looking for ways to make competition a more fun and enjoyable time for you. We will be having our Steering committee meeting with the chorus Competition coordinators in Des Moines during the dinner hour – I hope you can join us, I believe you will enjoy the pizza. Only one person per chorus, please.

We have 2 rooms at OPCC this year and the rest of the rooms will be at the Sheraton. We will be letting you know what the schedules will be as soon as we hear back from International as to what choruses will be competing.

Wishing you the best of matching vowels, breathing, and just having fun.

Linda Smith, Region 7 Events Coordinator



Region 7 One Voice

January 15, 2011



A Midwest Plains Region 7 Sweet Adelines International Publication Winter 2011

Very Important News



The Award Goes To.....

Contest time is upon us again so the timing is right to write an article on awards.

Awards are established either by Sweet Adelines International or

Region 7. All awards presented during the contest weekend require a minimum score of 400 points. The only exceptions to that rule are the Most Improved Chorus and Most Improved Quartet, they are the only awards that do not have a minimum point requirement.

International Awards

Chorus Medals are given to the top 5 places overall and the top 3 places in Division A (small 15 – 30 plus director) and Division AA (midsize 31 – 60 plus director). Trophies are presented to the directors and plaques are presented to the chorus.

Quartet Medals are given to the top 5 scoring quartets, individual trophies are presented to the Champion Quartet by Club 7 along with a traveling Trophy.

Most Improved Chorus is awarded to the chorus that has competed in the preceding regional competition, had at least 15 singing members on stage at any given time, and has improved the greatest number of points.

Regional Awards

All Regional Awards are presented at the Show of Champions except for the Harriett Gall Award.

Harriett Gall Award (traveling crystal vase) is presented to the Most Improved Chorus. This award is presented at the awards ceremony immediately following the chorus contest since the Most Improved Chorus is an International Award. The Harriett Gall award is sponsored and presented by the Kansas City Chorus in memory of Harriett Gall.

Ruby Pike Musical Excellence Award is presented to the Division A (small 15 – 30 plus di-

rector) chorus with the highest score in the sound category. This award is presented in the memory of Ruby Pike.

Novice Quartet Award (traveling plaque) is presented to the Novice Quartet (no more than one member has competed in a Regional or International quartet contest) scoring the highest number of points (minimum of 400 points to qualify for this award). This award is presented by Helen Shores, Queen of Harmony, Hallmarks, 1979, in memory of Mr. and Mrs. Bernard Kuhr (Helen's parents).

Garee Rogers award is presented to a member of Region 7 who has been willing to serve her chorus or the Region in the area of Administration. This award is presented in memory of Garee Rogers, grandmother of Melodee Wright.

(This article was written by Barb Patton, CRC (Chair of Regional Contest 2009) who has served on the Regional Steering Committee for the last approximately 20 years)

HONORING THOSE WHO GIVE...

Competition weekend. We love it; we hate it. We anticipate it; we dread it. Whichever category you fall into, or somewhere in the middle, you can't deny that Region 7 competition is the highlight of our year. Whatever your chorus' competition goal—win, place or not be embarrassed—it's what you work toward all year. Sweet Adelines, including your chorus, is an educational organization. Performance and competition are the means.

Competition weekend actually begins Friday morning with the judging panel and Competition Steering Committee briefing chorus directors and quartet members. The Regional Annual Membership Meeting (RAMM for short) on Friday afternoon really gets us all in the competition spirit. Beginning with the parade of chorus banners, it progresses to membership longevity and chorus growth awards, Regional Management Team recognition, with some valuable prizes thrown in. We also honor those regional members who deserve recognition outside their own chorus.



Region 7 One Voice

January 15, 2011



A Midwest Plains Region 7 Sweet Adelines International Publication Winter 2011

Very Important News

However large or small your chorus, it takes everyone working together to achieve your goals, whether they be raising money, buying costumes, improving your performance skills or marketing your chorus. Your chorus has its own method of rewarding those who work tirelessly to make your chorus better. Region 7 also honors some of your tireless workers. We depend on you the chorus member to tell us who especially deserves recognition. Below are details about how you can help bring special Region 7 recognition to someone from your chorus.

The Star Award honors that chorus member who always seems to make things happen. Something needs doing? She does it. Most times she doesn't even have to be asked. She does it without fanfare, not even wanting to be recognized. She shuns the limelight, says, "It was nothing", gives others the credit. She just considers it something she can do. You learn to count on her without even thinking about it. This lady deserves to proudly wear the glittering star pin knowing someone from her chorus thought enough of her contributions to tell the Region 7. In previous years, nominations were accepted only from chapter presidents. This year nominations for the Star Award will be accepted from all chorus and CAL members. Complete the form available on the Region 7 website and return to Phyllis Van Horn, leadon@cox.net. Deadline is March 10, 2011

The Butterfly Award was new in 2010. The goal of Sweet Adelines is to encourage personal growth in each of its members. And we've done that in spades! Each of us knows someone who when she first visited was very quiet, timid, unsure if she could meet the chorus expectations. Still she kept coming back eventually passing the audition with quaking knees and quavering voice. As time passed, you notice she's blossomed. Now she looks for ways to contribute and whatever she does, she does with confidence! Maybe she is involved in chorus administration or maybe it's the performance side. But one day you realize she's not the same person she was then. She's come out of her cocoon! Look around you; ask your riser

sisters for input. Then take the time to nominate your chorus' butterfly. Nominations will be accepted from chapter and CAL members on the Butterfly Nomination form available on the Region 7 website. Complete and return by March 10, 2011 to leadon@cox.net.

The Chorus Marketing Award was implemented in 2010. Marketing your chorus and your events is essential to sell tickets, bring in new members and to keep your community informed of your functions. How creatively you use the internet, newspapers, television, and other media is the key to success. Some of our choruses are very creative in marketing. We all can learn from their success. If you think your chorus deserves the award for its marketing campaign, ask your marketing coordinator to submit examples of her work to Jane Tham, at JLTham@aol.com by March 10, 2011.

Region 7 choruses are doing lots of things right. It takes all chorus members in order to succeed. Some deserve recognition beyond your rehearsal hall. Please help honor their efforts on the regional level. Submit your nomination for at least one of the awards today.

Find more information on the 2011 Regional Competition on the [Region 7 website!](#)

News From the Regional Management Team

Happy New Year Region 7!

Where did 2010 go? I hope you have come into 2011 with the same joy and enthusiasm as I have. Your Regional Management Team has been hard at work developing educational opportunities for 2011 and beyond. Here are a few highlights to mark in your calendars:

- January 28 & 29 Winter Music School with Kathy Carmody, West Des Moines, IA
- March 25 & 26 Regional Competition, Overland Park KS
- June 3-5, Battle of the Barbershop Stars, with Jean Barford, Jim Arns, Renee Porzel and Cindy Hansen
- August 5-6th, Leadership Retreat, Northwest Missouri State University, Maryville MO

Our region family has grown to eighteen chapters!

We also have a newly chartered chapter in the Region. Springfield Metro Chorus received their charter from International last month. Congratulations!

As 2010 came to a close, we had a few changes to the RMT:

A word of farewell:

Sandy Smith has served as our Regional Communications Coordinator for 5 years. During her tenure, Sandy was instrumental in updating our Regional Website, developing our e-newsletter and played a big part in developing the idea for our Battle of the Barbershop Stars event. Sandy and her husband have now retired and moved to their dream home in Montana. Sandy will be so missed, but we wish her all the best in this new phase of her life!

We welcome:

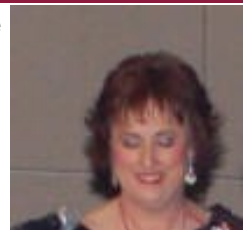
As of January 1st 2011, Alison Crannell from the Harmony Central Chorus will be completing Sandy's term as Communications Coordinator.

The Education Coordinator position on the team has been filled with the International appointment of Kim Kraut. Kim has been serving as our Directors Coordinator and is the Director of the RiverSong Chorus.



LaDonna Cheatham, Director of the Sound of the Heartland Chorus will be our Directors Coordinator effective January 1, 2011, replacing the vacancy left by Kim Kraut.

Janet Davis, Team Coordinator



**HAPPY NEW YEAR
FROM YOUR RMT!**



Have you registered to be a member of a Battle Chorus yet? Time is running out! Register on the Region 7 [website](#) NOW!

News From the Regional Management Team

COURTESIES AND PROTOCOL FOR REGION 7 LEADERS

At a recent RMT meeting we were reminded of the positive impact of treating others with welcoming hospitality and gracious respect. We thought our chapter leaders might benefit from the Team's learning experience so I'm sharing our list with you. As chapter leaders you set the example for how your chorus is viewed in your community, by your audiences, your guests and even your own members. Perhaps you can add a few items of your own. We hope you'll share this list with your Board/Team and chorus members.

Competition. All our quartets and choruses deserve an overwhelming welcome to the stage to their performance and then another big response when they enter the auditorium because they've worked hard, taken risks and learned much. We, more than anyone else, know how much work they put into preparing for their performance. An enthusiastic response also helps build a stronger bond between members of our region.

Community Relations.

1. When someone attends one of your chorus events, a rehearsal, or helps you raise money it's a big deal! **Be sure your guests and supporters** know how much you appreciate them.
2. The first rule of making money is "you need to spend money to make money". **So be generous with your** complimentary chorus event **tickets.** Region 7 medalist quartet members, queens, former chorus members, community and regional leaders should be offered a complimentary ticket. If they attend, some will bring a guest. Then you will have recouped the cost of the "free" ticket. It's more fun to perform for a full house and being offered a free ticket creates good will.

Outreach.

1. **Take the opportunity to attend** another chorus' event. Your presence will be appreciated and you just might get some new ideas for your own events. Visiting a chorus event outside Region 7 is also a good idea.

2. The flip side: Invite members from other choruses to your event. Consider inviting choruses from outside our region, too. Never pass up an opportunity to learn and make friends.

Learning and Sharing. Attend regional events prepared to participate. These events are your opportunity to toot your own horn, question, compare, and learn from your peers, regional leaders and faculty. Your chorus depends on you to be in the know and you probably have something to share that will benefit someone else. Encourage your chorus members to do the same.

Deadlines. Don't you just hate it when your chorus members don't meet deadlines? Deadlines are set for any number of important reasons. **Deadlines: Adhere to them!** That goes for deadlines set by Regional, International and your community. This includes financial obligations as well as those requiring information.

*"Happy are those who
dream dreams and are
ready to pay the price
to make them come
true."* ~Leon J. Suenes

Sweet Adelines International Updates

Increasing Membership Together with One Voice

Imagine one massive, coordinated, global membership drive where all our choruses open their doors at the same time to welcome guests to discover the joy of singing with Sweet Adelines International. Imagine the power of all choruses working together to increase our membership and build the Sweet Adelines brand. Imagine not being the world's "best kept secret" any longer! Mark your calendars to participate in the Worldwide Open House in January 2012, stay tuned for details, and imagine the possibilities...

COMING SOON: March 2011 webinar, Expansion of the Pilot Program, *Increasing Membership Together with One Message, One Voice!* More details to come.

"America's Got Talent" Auditions in January and February

www.agtauditions.com

Minneapolis, MN: January 22 and 23

Atlanta, GA: January 29 and 30

Houston, TX: February 12 and 13

Tacoma, WA: February 19 and 20

The producers of the hit reality TV show "America's Got Talent" are anxious to see the top talents of Sweet Adelines International on their stage. Auditions are open to anyone of any age with any talent and the producers are making appointments for auditions now! They are looking for amazingly talented acts and anyone who has a unique/entertaining story that is sure to charm the judges and viewers. Producers are asking for Sweet Adelines singing groups to register for auditions and schedule an appointment as soon as possible.

Audition information can be found at www.agtauditions.com, including pre-registration

forms, driving directions, what to bring to auditions, submitting a video audition and much more. Members are welcome to contact producer, Brian Updyke, with any specific questions at updyke.brian@gmail.com.

"America's Got Talent" is the biggest variety talent show in America, showcasing all kinds of acts from opera singers to fire jugglers to animal acts to magicians. They average 12 Million viewers per episode, and last Season's America's Got Talent finale peaked at an estimated 20 MILLION viewers! This is an amazing opportunity for all kinds of talent to take their act to the next level and, of course, the winner gets a million dollar prize!

Additional inquires or updates on your audition experience can be sent to membership coordinator Ann-Marie Dowling at annmarie@sweetadelineintl.org.

Watch the Zing! Interview and performance on New Day NW television program (King5) in Seattle:

<http://www.king5.com/new-day-northwest/Zing-Performs-105305213.html>

Have you checked out the International Headquarters *virtual tour*? If not, click [here](#) to visit.

As you prepare to compete at regional, you may want to refresh yourself on the performance level guidelines published by International. To do so, click [here](#).

Chorus and Quartet News

Springfield Metro Chorus has received their charter.

CONGRATULATIONS SPRINGFIELD AND WELCOME TO REGION 7!!

Some of you have been involved in the chartering process from the ground floor. There are lots of forms to complete, hoops to jump through all the while locating a director, attracting new members and raising money. And then you gotta get it all done before the deadline. These determined and resourceful ladies from Springfield completed all the requirements with plenty of time to spare.

Their baby shower will take place next Fall. If you haven't done so already, a welcome letter to Team Leader Bonni Jackson lvs2singbass@gmail.com would be appreciated. This addition brings our total to 18 choruses.

Off the Cuff quartet was recently selected as one of only eighteen a cappella groups from across the country to sing on the holiday video of Atlantic recording artists Straight No Chaser. The quartet ironically had twelve days to learn their portion of the SNC YouTube sensation "The 12 Days of Christmas" arrangement before SNC arrived in Des Moines for their October 20th concert.



The four members of Off the Cuff, Jennie Van Voorhis, Nan Strutzenberg, Alison Crannell, and Marilyn Kofmehl were asked to sit in on the SNC sound check and then were invited on stage to work with two SNC members, Randy Stine and Ryan Ahlwardt, during the filming.

The video is available for viewing on the Straight No Chaser website. Off the Cuff quartet is affiliated with Region 7 chorus, Harmony Central in Des Moines, Iowa.

City of Fountains members are pleased to welcome four new members to the fold. This is indeed a time to celebrate with our friends - and we want to, first of all, welcome these wonderful women to our chorus!

Welcome Barbara, Corinna, Carla and Stephanie!

The Chorus performed in the Women's Follies at Johnson County Community College on Sunday, October 17. This event is sponsored by the Johnson County Parks and Rec. Department, and features many different kinds of acts, all performed by women in the community. We are pleased to be a part of this program.

The City of Fountains Chorus Show, "Harmony Tonight" was held on Saturday November 13 at Congregation Kol Ami in Prairie Village, KS. Featured guests were the Hootin' Annie's.

Our Salvation Army Bell Ringing event once again took place on December 4 at Ward Parkway Mall.

We enjoyed watching the web cast of our International Competition in Seattle, where our Wamego Dutch Mill Chorus and Legacy and Cabaret stole the show.

Our Region 7 RES was most successful, and COF Chorus was well represented there. A good time was had by all!

RiverSong recently performed at the Nodaway County Historical Society museum in conjunction with "New Harmonies: Celebrating American Roots Music" traveling exhibit. The exhibit is part of an ongoing partnership between the Missouri Humani-

Chorus and Quartet News

ties Council and the Smithsonian Institution Traveling Exhibition Service (SITES). For more information, visit nodawayhistorical.net or contact Mike Steiner at 660.562.1288.

The New Harmonies exhibit, which will be on display in Maryville through December 23, showcases aspects of America's roots music through a selection of photographs, recordings, instruments, lyrics



and artist profiles. Historians have been able to trace the beginning of the barbershop style to the established traditions of black music in general and African-American music in particular.

Lynn Abbott published "Play That Barbershop Chord" in *American Music* (Fall, 1992) that presented a thoroughly documented account of the roots of barbershop music. Abbott draws from turn-of-the-century articles, passages from books out-of-print and remembrances of early quartet singing by African-American musicians like Jelly Roll Morton and Louis Armstrong.

"We were extremely excited to be asked to demonstrate the unique barbershop sound as part of the Smithsonian Institution traveling exhibit" said Donna Turk. "It's a great opportunity to show how barbershop harmony, one of only a handful of musical styles indigenous to the United States, has evolved into a highly stylized art form." Dr. Mike Steiner of

the Nodaway County Historical Society museum said "RiverSong's performance was excellent and the historical narrative was spot-on – a perfect complement to the display."

Harmony Central is our featured chorus in this newsletter edition. Did you know they have a new director? Learn who their director is and more about this Region 7 chorus by clicking [here](#).

Want to see your Chorus news in the next newsletter?

If so, send your articles to Alison Crannell at Alison.crannell@gmail.com by April 15, 2011 for the May Newsletter.

Important Regional Dates

Date	Description	Faculty	Location
January 28-29, 2011	Winter Music School	Kathy Carmody	West Des Moines Marriott, W. Des Moines IA
February 25-26, 2011	RMT Budget Meeting		Downtown Marriott Kansas City MO
March 24-27, 2011	Regional Competition		Overland Park Convention Center
June 3-5, 2011	Battle of the Barbershop Stars	Jim Arns and Renee Porzel Jean Barford and Cindy Hansen	Downtown Marriott Kansas City MO
August 5-6, 2011	Leadership Retreat		Northwest Missouri State Marysville MO
August 20, 2011	Wichita Chorus Annual Show		Wichita KS
August 27, 2011	Emerald City Chorus Annu- al Show		Wichita KS
September 16-17, 2011	Fall Music School and Trib- ute to the Top	Vickie Maybury	TBD
October 1, 2011	Harmony Central Chorus		Des Moines, IA
October 18-22, 2011	International Convention		Houston TX
November 11-12, 2011	RMT Strategic Planning Meeting		TBD
February 3-4, 2012	Winter Music School	Sandy Robinson Marron	TBD
March 29-April 1, 2012	Regional Competition		Overland Park Convention Center
October 30-November 3, 2012	International Convention		Denver CO

Have you subscribed to the Region 7 digital Newsletter?

If not, go to the Region 7 [website](#) and click on the link!
You will receive an e-mail that will provide a link for you
to confirm your subscription. Once you have clicked on
that link, you will be subscribed.